



ISSN: 0975-833X

RESEARCH ARTICLE

ANALYSIS AND DESIGN OF A PUSH-PULL QUASI-RESONANT BOOST POWER FACTOR CORRECTOR

*Dr. Balakrishna Reddy, V.

Department of EEE, Vijay Rural Engineering College, Nizamabad, Telangana State, India

ARTICLE INFO

Article History:

Received 26th March, 2015
Received in revised form
12th April, 2015
Accepted 29th May, 2015
Published online 30th June, 2015

Key words:

Total Harmonic Distortion (THD),
Quasi-Resonant (QR),
Zero-Current Switching (ZCS),
Discontinuous Mode Current (DCM),
Electromagnetic Interference (EMI)

ABSTRACT

This project presents a power-factor corrector (PFC), which is mainly composed of two phase transition-mode (TM) boost-type power-factor correctors (PFCs) and a coupled inductor. By integrating two boost inductors into one magnetic core, not only the circuit volume is reduced, but also the operating frequency of the core is double of the switching frequency. Therefore, both the power-factor value and the power density are increased. A cut-in half duty cycle can reduce the conduction losses of the switches and both the turns and diameters of the inductor windings. The advantages of a TM boost PFC, such as quasi-resonant (QR) valley switching on the switch and zero-current switching (ZCS) of the output diode, are maintained to improve the overall conversion efficiency. The hardware design is implemented by a PIC16F877A controller circuit.

Copyright © 2015 Dr. Balakrishna Reddy. This is an open access article distributed under the Creative Commons Attribution License, which permits unrestricted use, distribution, and reproduction in any medium, provided the original work is properly cited.

Citation: Dr. Balakrishna Reddy, V. 2015. "Analysis and design of a Push-Pull quasi-resonant boost power factor corrector", *International Journal of Current Research*, 7, (6), 17284-17291.

INTRODUCTION

To increase the power rating of a TM boost PFC to the medium level without raising the EMI issue and increasing the current stresses of the circuit elements, an interleaved TM boost PFC is recently proposed. Derived from two TM boost converters with the interleaved operations, the power rating is increased and the input current and output current are shared equally with lower current ripples. Therefore, the total harmonic distortion (THD) of input current and the output capacitance can be reduced. However, the need of two inductors with two independent cores increases the circuit volume. In this paper, a push-pull boost PFC composed of two interleaved TM boost PFCs and a coupled inductor is proposed. A single magnetic core is used. The two identical modules can share the output power and promote the power capability up to the medium-power-level applications. In addition, coupling the two distributed boost inductors into a single magnetic core substantially reduces the circuit volume and the cost, which are the important targets of the development of switching power supply today. The interleaved operations of the switches act like a push-pull converter.

The difference is that the operating frequency of the core is double of the switching frequency, which means that not only the circuit volume is reduced, but also the operating frequency of the core is double of the switching frequency. Comparing with single-phase TM boost PFC, both the input and output current ripple of the proposed PFC can be reduced if the equivalent inductance of the coupled inductor equals the inductance of single-phase TM boost PFC.

MODULE DESCRIPTION

PFC (Power Factor Correction)

The Reactive Power charge on your electricity bill is directly targeted against those companies who do not demonstrate clear energy efficiency use. You will find this charge itemized on your electricity bill. Reactive power charges can be made significantly smaller by the introduction of Power Factor Correction Capacitors which is a widely recognized method of reducing an electrical load and minimizing wasted energy, improving the efficiency of a plant and reducing the electricity bill. It is not always necessary to reach a power factor of 1. A cost effective solution can be achieved by increasing your power factor to greater than 0.95

*Corresponding author: Dr. Balakrishna Reddy, V.
Department of EEE, Vijay Rural Engineering College, Nizamabad,
Telangana State, India.

CCM (Continues Conduction-Mode)

Continuous-conduction-mode (CCM) means that the current in the energy transfer inductor never goes to zero between switching cycles. In other words Continuous Current Mode (CCM) means that current through inductor flows continuously throughout the switching period always greater than zero

DCM (Discontinuous-Conduction-Mode)

In discontinuous-conduction-mode (DCM) the current goes to zero during part of the switching cycle. In other words Discontinuous Current Mode (DCM) means that current through inductor reaches zero before the end of the switching period (when switch is OFF).

TM (Transition Mode)

The transition-mode (TM) technique is widely used for power factor correction in low and middle power applications such as lamp ballasts, high-end adapters, flat screen TVs and monitors, PC power supplies and all SMPS having to meet regulations in harmonics reduction.

QR (Quasi Resonant)

The principle of quasi-resonant conversion is to reduce the turn on losses of the power switch in a topology. A resonant converter (1) minimizes the turn on losses and works in a very different way. One way of explaining quasi-resonant operation is to consider it as an extension of discontinuous conduction mode operation

THD (Total Harmonic Distortion)

Total harmonic distortion (THD) is a complex and often confusing concept to grasp. However, when broken down into the basic definitions of harmonics and distortion, it becomes much easier to understand. Now imagine that this load is going to take on one of two basic types: linear or nonlinear. The type of load is going to affect the power quality of the system. This is due to the current draw of each type of load. Linear loads draw current that is sinusoidal in nature so they generally do not distort the waveform (Fig. A). Most household appliances are categorized as linear loads. Non-linear loads, however, can draw current that is not perfectly sinusoidal (Fig. B). Since the current waveform deviates from a sine wave, voltage waveform distortions are created. Thus waveform distortions can drastically alter the shape of the sinusoid. However, no matter the level of complexity of the fundamental wave, it is actually just a composite of multiple waveforms called harmonics.

Fig. A. Ideal sine wave

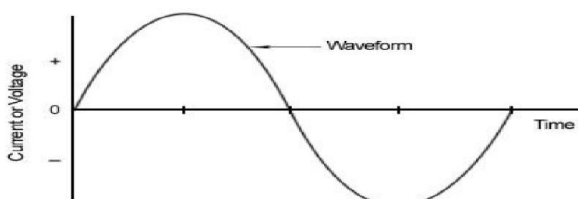
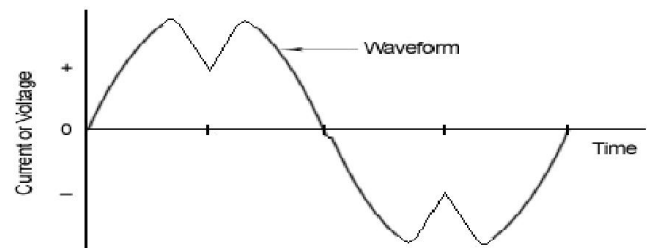


Fig. B. Distorted waveform



Harmonics have frequencies that are integer multiples of the waveform's fundamental frequency. For example, given a 60Hz fundamental waveform, the 2nd, 3rd, 4th and 5th harmonic components will be at 120Hz, 180Hz, 240Hz and 300Hz respectively. Thus, harmonic distortion is the degree to which a waveform deviates from its pure sinusoidal values as a result of the summation of all these harmonic elements. The ideal sine wave has zero harmonic components. In that case, there is nothing to distort this perfect wave. Total harmonic distortion, or THD, is the summation of all harmonic components of the voltage or current waveform compared against the fundamental component of the voltage or current wave:

$$\text{THD} = \frac{\sqrt{V_2^2 + V_3^2 + V_4^2 + \dots + V_n^2}}{V_1} * 100\%$$

POWER FACTOR

The power factor of an AC electrical power system is defined as the ratio of the real power flowing to the load, to the apparent power in the circuit, and is a dimensionless number between -1 and 1. Real power is the capacity of the circuit for performing work in a particular time. Apparent power is the product of the current and voltage of the circuit. Due to energy stored in the load and returned to the source, or due to a non-linear load that distorts the wave shape of the current drawn from the source, the apparent power will be greater than the real power. A negative power factor occurs when the device which is normally the load generates power which then flows back towards the device which is normally considered the generator.

In an electric power system, a load with a low power factor draws more current than a load with a high power factor for the same amount of useful power transferred. The higher currents increase the energy lost in the distribution system, and require larger wires and other equipment. Because of the costs of larger equipment and wasted energy, electrical utilities will usually charge a higher cost to industrial or commercial customers where there is a low power factor. Linear loads with low power factor (such as induction motors) can be corrected with a passive network of capacitors or inductors. Non-linear loads, such as rectifiers, distort the current drawn from the system. In such cases, active or passive power factor correction may be used to counteract the distortion and raise the power factor.

The devices for correction of the power factor may be at a central substation, spread out over a distribution system, or built into power-consuming equipment.

ZCS (Zero-current switching)

Transistor turn-off transition occurs at zero current. Zero current switching eliminates the switching loss caused by IGBT current tailing and by stray inductances. It can also be used to commutate SCR's. In switching technique, the mainly research carried out thus far pertains to hard switching and soft switching techniques. Hard switching technique relates to the stressful switching behaviors of power electronics devices whilst soft switching techniques are applied to eliminate the harmful effects of hard switching. Therefore soft switching techniques are more significantly developed and are normally applied to reduce the problems of switching losses in dc-dc power converters operating with high switching frequency. The ZCS is a type of soft switching technique which was first proposed by F C Y Lee et al (1987). Reducing stress on the switching components is a major incentive for resonant operation; and we need to understand ways through which that might be fulfilled. The simplest approach and the one to which most of this paper presents ZCS operation of a converter switch must be such that involves the current flowing through the switch being induced to rise gradually just after the switch is turned-on so that it has a ZCS turn-on.

The switch current must also be induced to descend gradually just before the switch is turned-off so that it can have a ZCS turn-off. The ZCS turn-off feature of a converter switch can be made certain by simply connecting an inductor in series as the current flowing through an inductor cannot change immediately. Connecting an inductor in series with a switch also ensures that the current flowing through the other devices in the converter is gradually drawn back so that they can turn-off with ZCS. The ZCS turn-off of a converter switch can be made certain by providing another path for the current to flow through, just before the switch is turned off. Since the switch has a relatively small voltage drop, the other path must be at a lower voltage potential so that current can be turned away from the switch

EMI (Electromagnetic Interference)

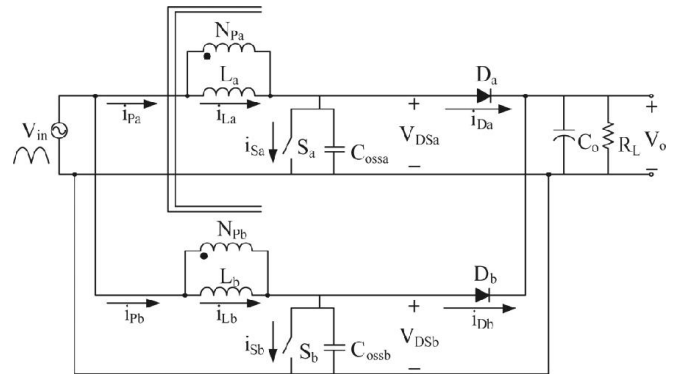
Radiated EMI

An electromagnetic (EM) wave is produced when there is a magnitude change in voltage and current. If that change in voltage is coupled to a conductor of suitable length by direct connection, stray capacitance or parasitic inductance, then the EM wave propagates through space and affects a large area. This generated wave can affect nearby equipment.

Conducted EMI

Changes in voltage and current can be imposed on any cables connected to a piece of equipment and conducted to another piece of equipment, compromising its operation. Connecting cables include mains supply cabling, audio connection leads, data transfer cables and telephone cabling.

CIRCUIT EXPLANATION



Above figure shows the schematics of the proposed topology. Module A consists of the switch Sa, the winding NPa, the inductor La and the output diode Da. Module B consists of the switch Sb, the winding NPb, the inductor Lb and the output diode Db. These two modules have a common output capacitor Co. La and Lb is two coupled windings wound on the same magnetic core. Theoretically, the same turns of these two windings will lead to the same inductances. The proposed PFC is operated by the TM control with a constant on-time and variable switching frequencies. To analyze the operating principles, there are some assumptions listed as follows.

- The conducting resistances of Sa and Sb are ideally zero. The conduction time interval is DT_s , where D is the duty cycle and T_s is the switching period.
- The forward voltages of Da and Db are ideally zero.

The magnetic core for manufacturing La and Lb is perfectly coupled without leakage inductance. In addition, the turns of the windings NPa and NPb are the same. Therefore, La and Lb are also matched.

Operating Modes

Mode 1: $t_0 < t < t_1$

Mode 2: $t_1 < t < t_2$

Mode 3: $t_2 < t < t_3$

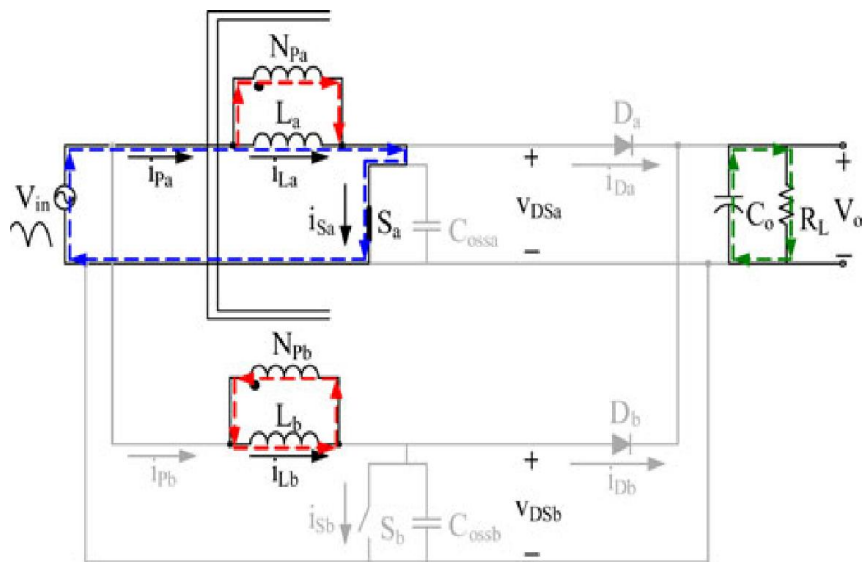
Operating Modes Explanation

Mode 1: $t_0 < t < t_1$

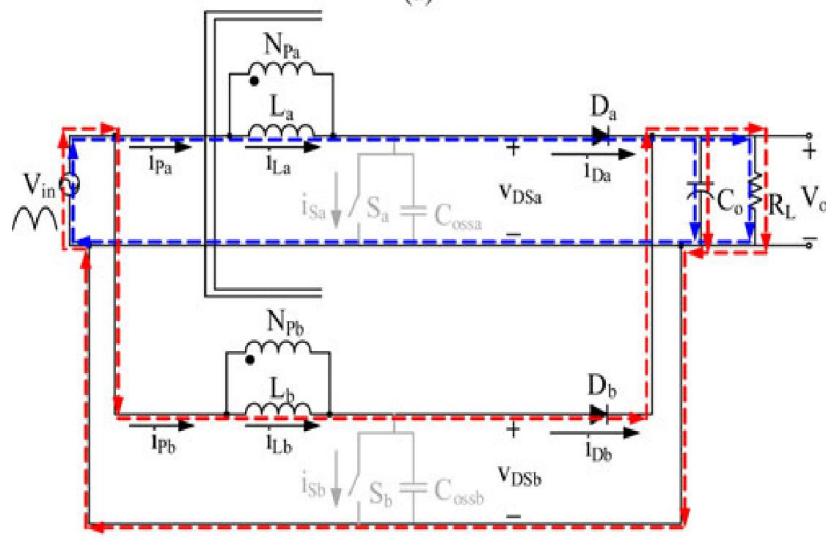
Sa conducts. Thus, the voltage across NPa equals to the rectified line-in voltage V_{in} . The inductor current i_{La} increases linearly, and Da is reverse biased. In module B, Sb is turned OFF.

The voltage across NPa is coupled to NPb. Hence, the voltage across NPb is also V_{in} , and the dotted terminal is positive. Lb stores energy as La does.

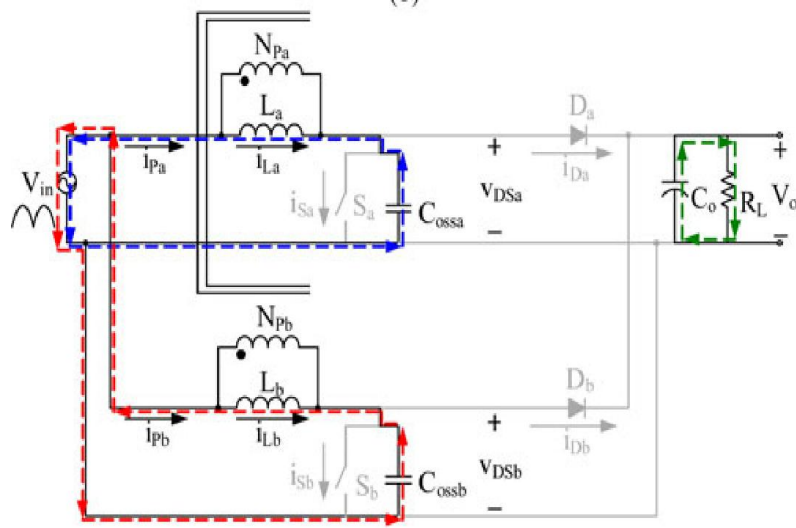
The inductor current i_{Lb} increases linearly and flows into the non dotted terminal of NPb. By the coupling effect, this current flows into the dotted node of NPa. Since the voltage across Sb is zero, Db is also reverse-biased. Co supplies the energy to the load.



(a)



(b)



(c)

Mode 2: $t_1 < t < t_2$

S_a is turned OFF. D_a conducts for i_{La} to flow continuously. L_a releases its energy to C_o and the load. The voltage across N_{Pa} is $(V_o - V_{in})$ and the dotted terminal is negative. In module B, S_b is still turned OFF, the voltage across N_{Pa} is coupled to N_{Pb} .

Hence, the voltage across N_{Pb} is also $(V_o - V_{in})$, and the dotted node is negative. D_b is thus forward-biased to carry the continuous i_{Lb} .

L_b also releases its energy to C_o and the load. Both i_{La} and i_{Lb} are decreasing linearly. This state ends until L_a and L_b release their energies completely, and i_{La} and i_{Lb} decrease to zero.

Mode 3: $t_2 < t < t_3$

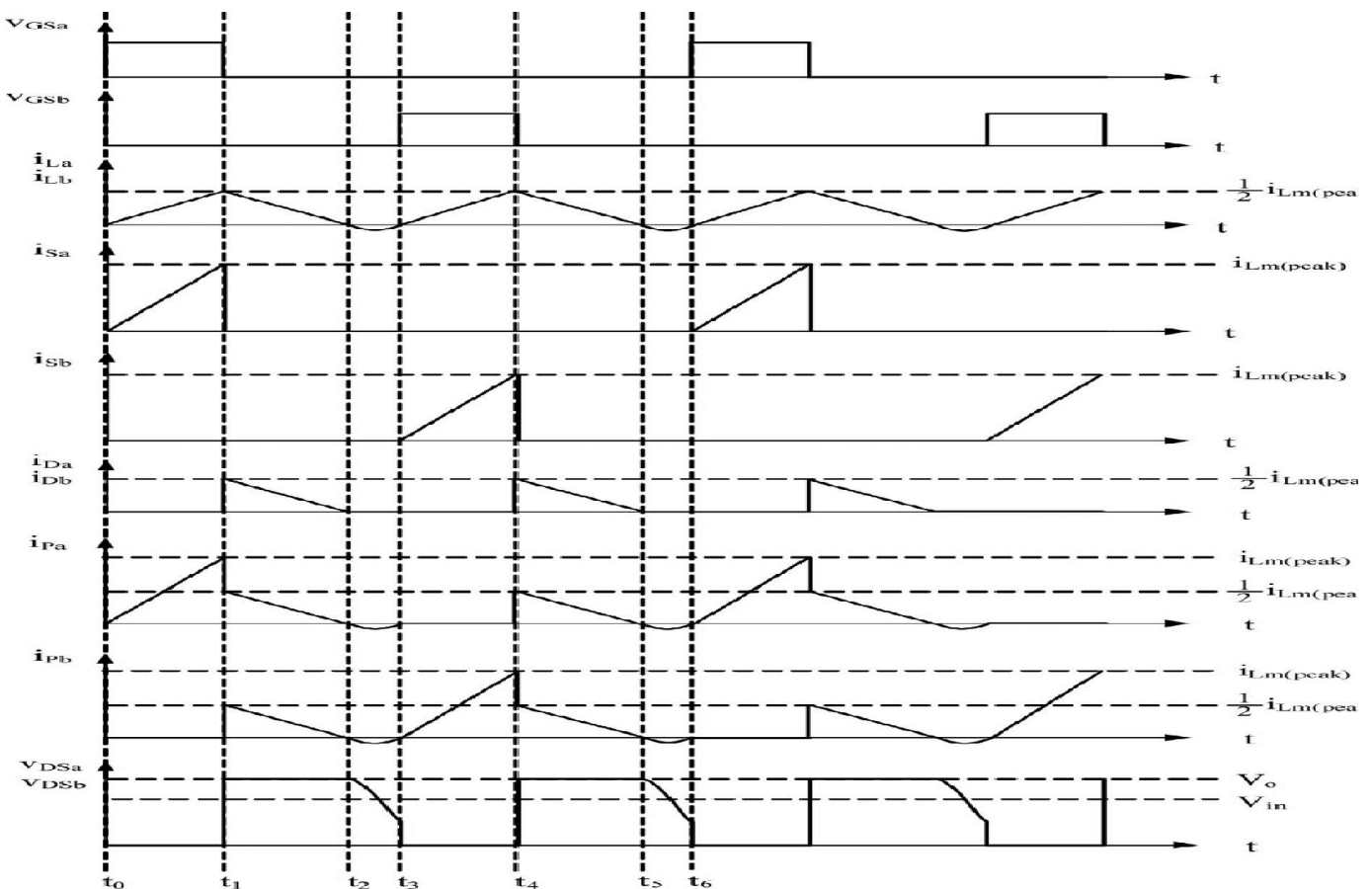
S_a keeps turned OFF. At t_2 , D_a is turned OFF with ZCS since i_{La} decreases to zero naturally. Similarly, in module B, S_b is still turned OFF. D_b is turned OFF with ZCS at t_2 since i_{Lb} decreases to zero naturally, too. In this interval, C_o supplies the energy to the load. At the same time, the series resonant loop formed by V_{in} , the parallel connection of L_a and L_b , and the output capacitance of the switch S_a , C_{ossa} , starts to resonate. Similarly, in module B, the series resonant loop formed by V_{in} , the parallel connection of L_a and L_b , and the output capacitance of the switch S_b , C_{ossb} , begins to resonate. Therefore, v_{DSa} and v_{DSb} decrease simultaneously.

RESULTS**TECHNIQUES USED**

- Push Pull Topology
- Boost Power Factor Correction

TECHNIQUES DESCRIPTION**Push Pull Topology**

A push-pull converter is a type of DC-to-DC converter, a switching converter that uses a transformer to change the voltage of a DC power supply. The distinguishing feature of a push-pull converter is that the transformer primary is supplied with current from the input line by pairs of transistors in a symmetrical push-pull circuit. The transistors are alternately switched on and off, periodically reversing the current in the transformer. Therefore current is drawn from the line during both halves of the switching cycle. This contrasts with buck-boost converters, in which the input current is supplied by a single transistor which is switched on and off, so current is only drawn from the line during half the switching cycle. During the other half the output power is supplied by energy stored in inductors or capacitors in the power supply. Push-pull converters have steadier input current, create less noise on the input line, and are more efficient in higher power applications. The term push-pull is sometimes used to generally refer to any converter with bidirectional excitation of the transformer.



Key wave forms for proposed system

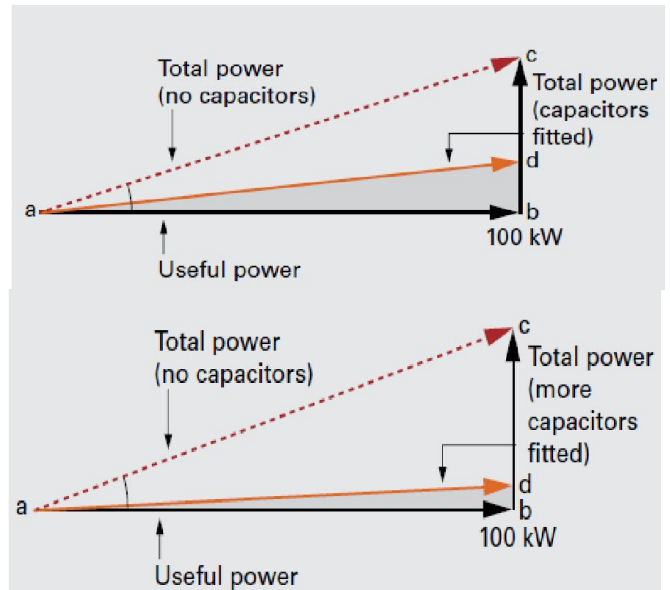
For example, in a full-bridge converter, the switches (connected as an H-bridge) alternate the voltage across the supply side of the transformer, causing the transformer to function as it would for AC power and produce a voltage on its output side. However, push-pull more commonly refers to a two-switch topology with a split primary winding. In any case, the output is then rectified and sent to the load. Capacitors are often included at the output to filter the switching noise. In practice, it is necessary to allow a small interval between powering the transformer one way and powering it the other: the “switches” are usually pairs of transistors (or similar devices), and were the two transistors in the pair to switch simultaneously there would be a risk of shorting out the power supply. Hence, a small wait is needed to avoid

Boost Power Factor Correction

The Reactive Power charge on your electricity bill is directly targeted against those companies who do not demonstrate clear energy efficiency use. You will find this charge itemized on your electricity bill. Reactive power charges can be made significantly smaller by the introduction of Power Factor Correction Capacitors which is a widely recognized method of reducing an electrical load and minimizing wasted energy, improving the efficiency of a plant and reducing the electricity bill. It is not always necessary to reach a power factor of 1. A cost effective solution can be achieved by increasing your power factor to greater than 0.95 As a poor power factor results in an increased costs and increased requirement for cabling and other issues, power factor correction is widely applied to large factors, motors and other items. Power factor correction (PFC) techniques aim to bring the power factor closer to unity by reducing the effects of reactive power.

In the great majority of cases, poor power factor is due to inductive loads which can be compensated by adding electrical devices called capacitors into the circuit.

Some capacitors fitted and Near perfect power factor correction with capacitors



Passive PFC

The most common type of PFC is Passive Power Factor Correction (Passive PFC). Passive PFC uses a capacitive filter at the AC input to correct poor power factor.

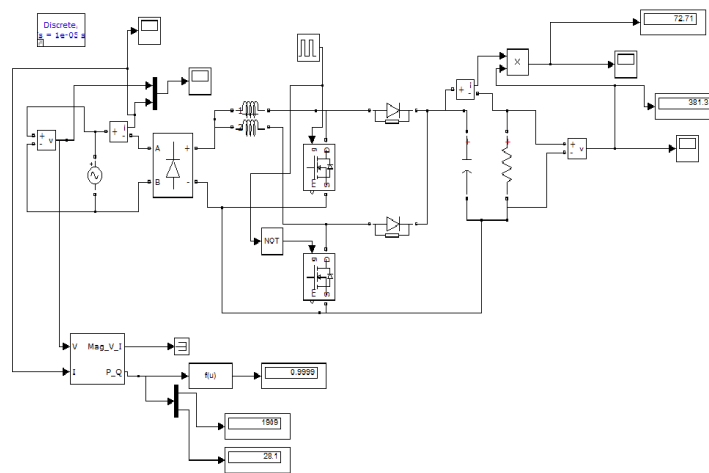


Fig. 3. Open loop system

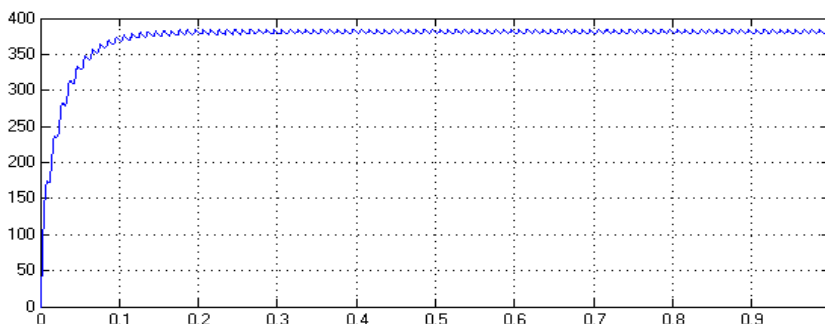


Fig. 4. Output voltage 380V (DC)

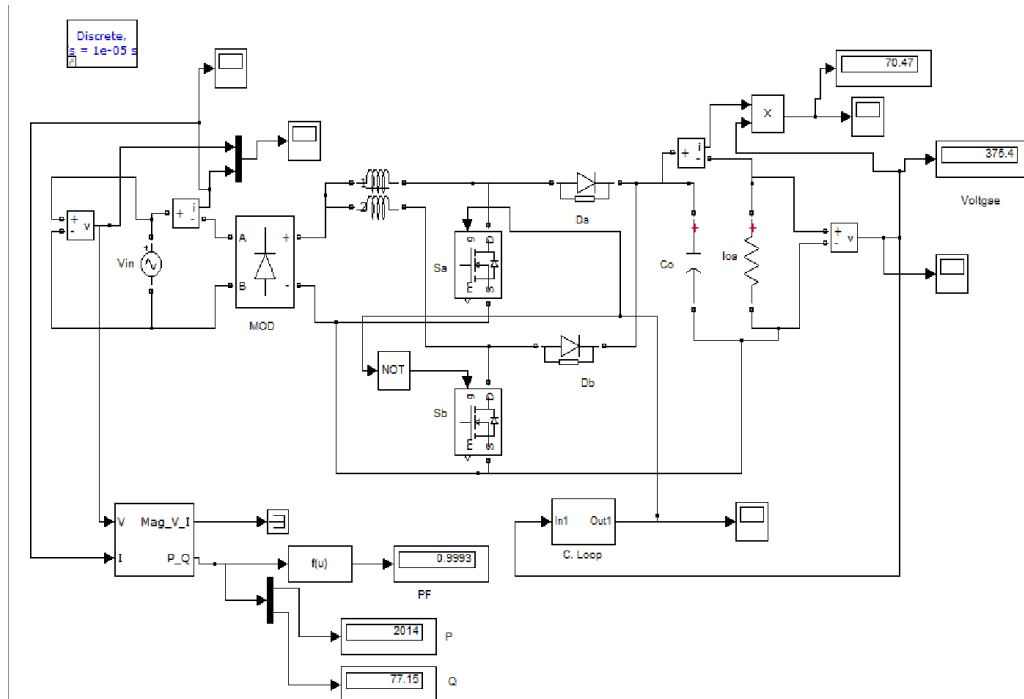


Fig. 5. Closed loop circuit

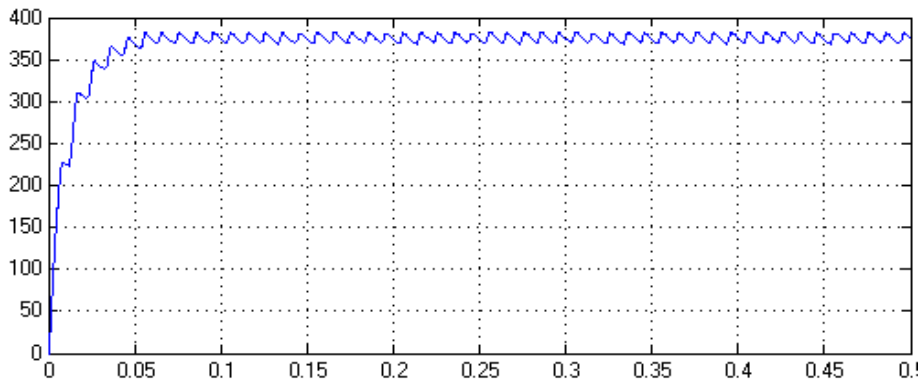
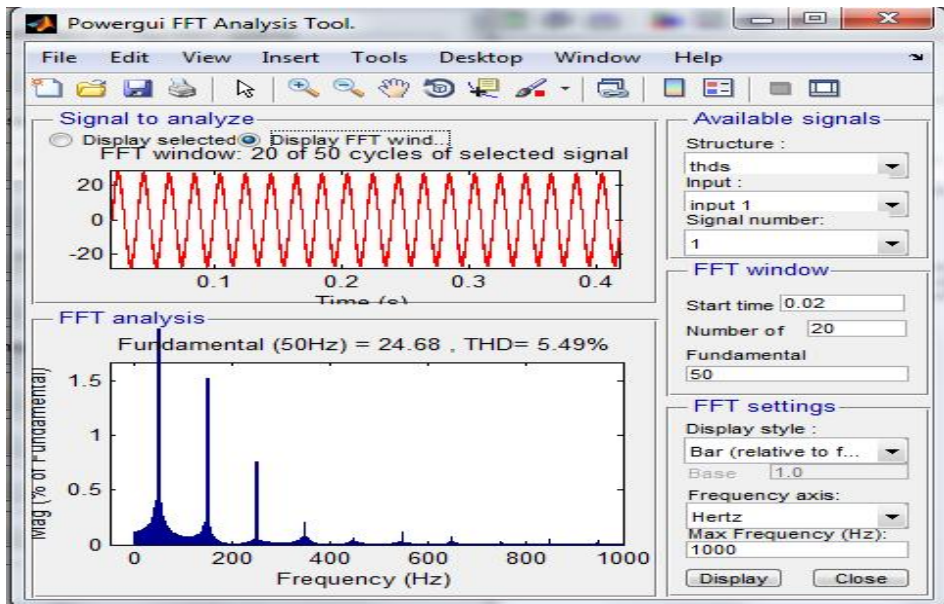


Fig. 6. Closed loop circuit output

I/P Current Distortion



Passive PFC may be affected when environmental vibration occurs. Passive PFC requires that the AC input voltage be set manually. Passive PFC also does not use the full energy potential of the AC line.

Active PFC

The preferable type of PFC is Active Power Factor Correction (Active PFC) since it provides more efficient power frequency. Because Active PFC uses a circuit to correct power factor, Active PFC is able to generate a theoretical power factor of over 95%. Active Power Factor Correction also markedly diminishes total harmonics, automatically corrects for AC input voltage, and is capable of a full range of input voltage. Since Active PFC is the more complex method of Power Factor Correction, it is more expensive to produce an Active

PFC power supply

Simulation Design open loop

A simulation design open loop system as shown in **Fig.3** is implemented in MATLAB SIMULINK with the help of coupled inductor, switches and diodes we get desired output voltage level (**Fig.4**)

Simulation Design closed loop

A simulation design open loop system as shown in **Fig.4.5** is implemented in MATLAB SIMULINK with the help of coupled inductor, switches and diodes we get desired output voltage level (**Fig.4.6**)

EXPECTED INPUT AND EXPECTED OUTPUT

Here the Input given to the circuit is 110V Vrms and the output got is 380V DC (high voltage)

Conclusion

ADVANTAGES

- Improve power factor & power density.
- Conduction losses & Switching losses are reduced.
- Overall efficiency is improved.
- Ripples are reduced.

APPLICATIONS

Medium power supplies. HEV (Hybrid Electrical Vehicles).
UPS

FUTURE SCOPE

The system can be extended for more voltage range or levels. Increase in more levels will surely increase the voltage gain and efficiency of the converter system. The output DC can be used for high voltage applications.

REFERENCES

- Akın, B. and Bodur, H. Feb. 2011. "A new single-phase soft-switching power factor correction converter," *IEEE Trans. Power Electron.*, vol. 26, no. 2, pp. 436–443.
- Chen, Y.T., Shiu, S. and Liang, R. Jan. 2012. "Analysis and design of a zero-voltage switching and zero-current-switching interleaved boost converter," *IEEE Trans. Power Electron.*, vol. 27, no. 1, pp. 161–173.
- Dwari, S. and Parsa, L. Jan. 2011. "An efficient high-step-up interleaved DC–DC converter with a common active clamp," *IEEE Trans. Power Electron.*, vol. 26, no. 1, pp. 66–78.
- Hsia, T.H. Tsai, H.Y. Chen, D., Lee, M. and Huang, C.S. Jan. 2011. "Interleaved active-clamping converter with ZVS/ZCS features," *IEEE Trans. Power Electron.*, vol. 26, no. 1, pp. 29–37.
- Hsieh, Y.C., Chen, M.R. and Cheng, H.L. Jan. 2011. "An interleaved flyback converter featured with zero-voltage transition," *IEEE Trans. Power Electron.*, vol. 26, no. 1, pp. 79–84.
- Roh, Y.S., Moon, Y.J., Gong, J.C. and Yoo, C. Feb. 2011. "Active power factor correction (PFC) circuit with resistor-free zero-current detection," *IEEE Trans. Power Electron.*, vol. 26, no. 2, pp. 630–637.
- Su, B., Zhang, J. and Lu, Z. Feb. 2011. "Totem-pole boost bridgeless PFC rectifier with simple zero-current detection and full-range ZVS operating at the boundary of DCM/CCM," *IEEE Trans. Power Electron.*, vol. 26, no. 2, pp. 427–435.
- Yao, K., Ruan, X., Mao, X. and Ye, Z. Jan. 2012. "Reducing storage capacitor of a DCM boost PFC converter," *IEEE Trans. Power Electron.*, vol. 27, no. 1, pp. 151–160.
- Zhang, X. and Spencer, J.W. Dec. 2011. "Analysis of boost PFC converters operating in the discontinuous conduction mode," *IEEE Trans. Power Electron.*, vol. 26, no. 12, pp. 3621–3628.
